

MAYA

L'AGENCE IMMOBILIERE FAMILIALE

2 380 000 €

Buying maison double

7 rooms

Surface : 140 m²

Surface of the land : 160 m²

Exposition : Est ouest

View : Port

Hot water : Electrique

Inner condition : excellent

External condition : good

Amenities :

Laundry room, double glazing, calm,
Bedroom on ground floor, piscinable

5 bedroom

1 terrace

3 showers

2 WC

2 parkings



Maison double Grimaud

Quietly located in Port Grimaud with a beautiful clear view of the port, stylish house offering a beautiful entrance, a large double living room opening onto a summer terrace and its garden, fully equipped American kitchen, 5 bedrooms including 1 on the ground floor. foot, 3 bathrooms. Renovated with taste, authentic charm and all modern comforts. Sold with a double mooring 12 m long x 8.4 m wide and 2 numbered parking spaces.

Fees and charges :

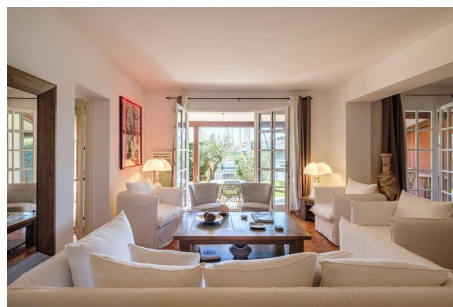
Well condominium

2 380 000 € fees included

Ref. : 577V11687M - Mandat n°5977

Document non contractuel

20/05/2024 - Prix T.T.C



Agence Maya - 6, rue de Verdun - 83120 Sainte Maxime

Tél: 33 (0)4 94 49 20 48 - contact@agencemaya.com

Carte professionnelle n°CPI 83042016000013329 CCI VAR - 428 710 867 RCS FREJUS

Garantie financière : Galian, Montant de 120 000 € - Document non contractuel