

MAYA

L'AGENCE IMMOBILIERE FAMILIALE

498 000 €

Buying village house

3 rooms

Surface : 90 m²

Surface of the living : 35 m²

Surface of the land : 150 m²

Exposition : Sud ouest

View : Campagne

Hot water : Electrique

Inner condition : excellent

External condition : good

Couverture : tiles

Amenities :

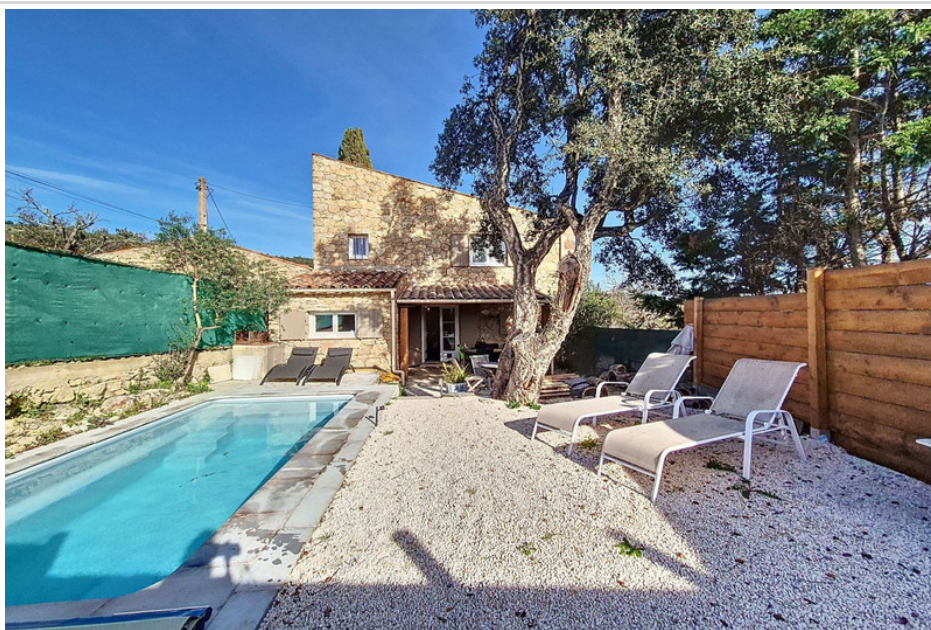
Laundry room, double glazing, calm, pool

2 bedroom

1 bathroom

1 WC

1 parking



Village house Le Plan-de-la-Tour

Old sheepfold completely renovated of 90 m², with plot of land of 150 m² and its swimming pool, consisting on the ground floor, of a covered terrace, living room/lounge with fireplace and pellet stove, fitted kitchen. Upstairs, 2 bedrooms, each with its dressing room and one with mezzanine and small storage room, 1 bathroom. Very beautiful volumes, very pleasant outdoor space.

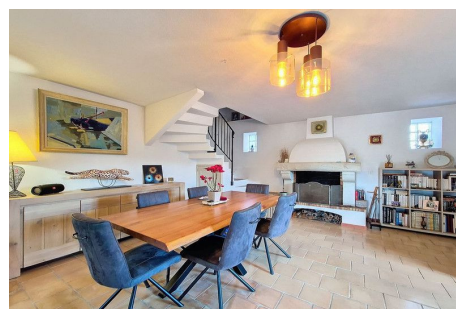
Fees and charges :

498 000 € fees included

Ref. : 577V11699M - Mandat n°6016

Document non contractuel

04/05/2025 - Prix T.T.C



Agence Maya - 6, rue de Verdun - 83120 Sainte Maxime

Tél: 33 (0)4 94 49 20 48 - contact@agencemaya.com

Carte professionnelle n°CPI 83042016000013329 CCI VAR - 428 710 867 RCS FREJUS

Garantie financière : Galian, Montant de 120 000 € - Document non contractuel